

Bauhaus Body Movement

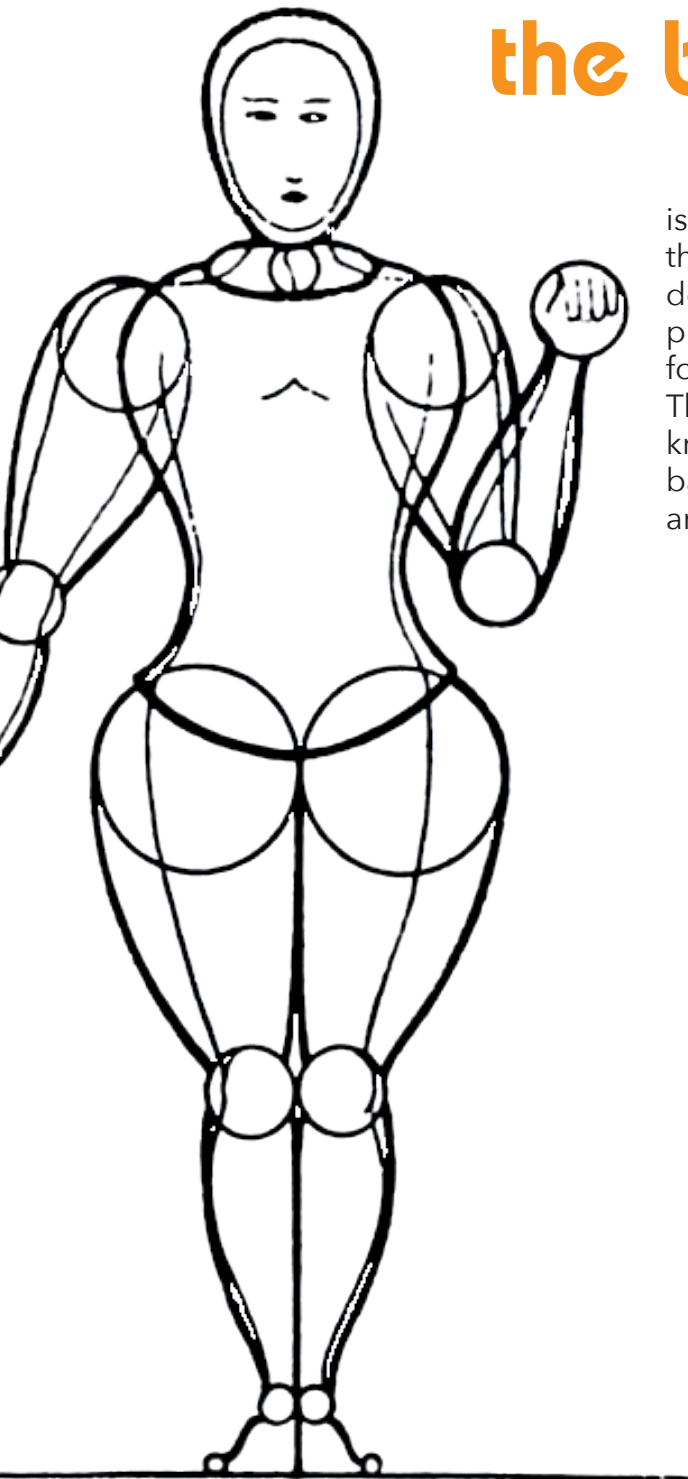
exploring the Triadic Ballet



Kathryn Scheuring

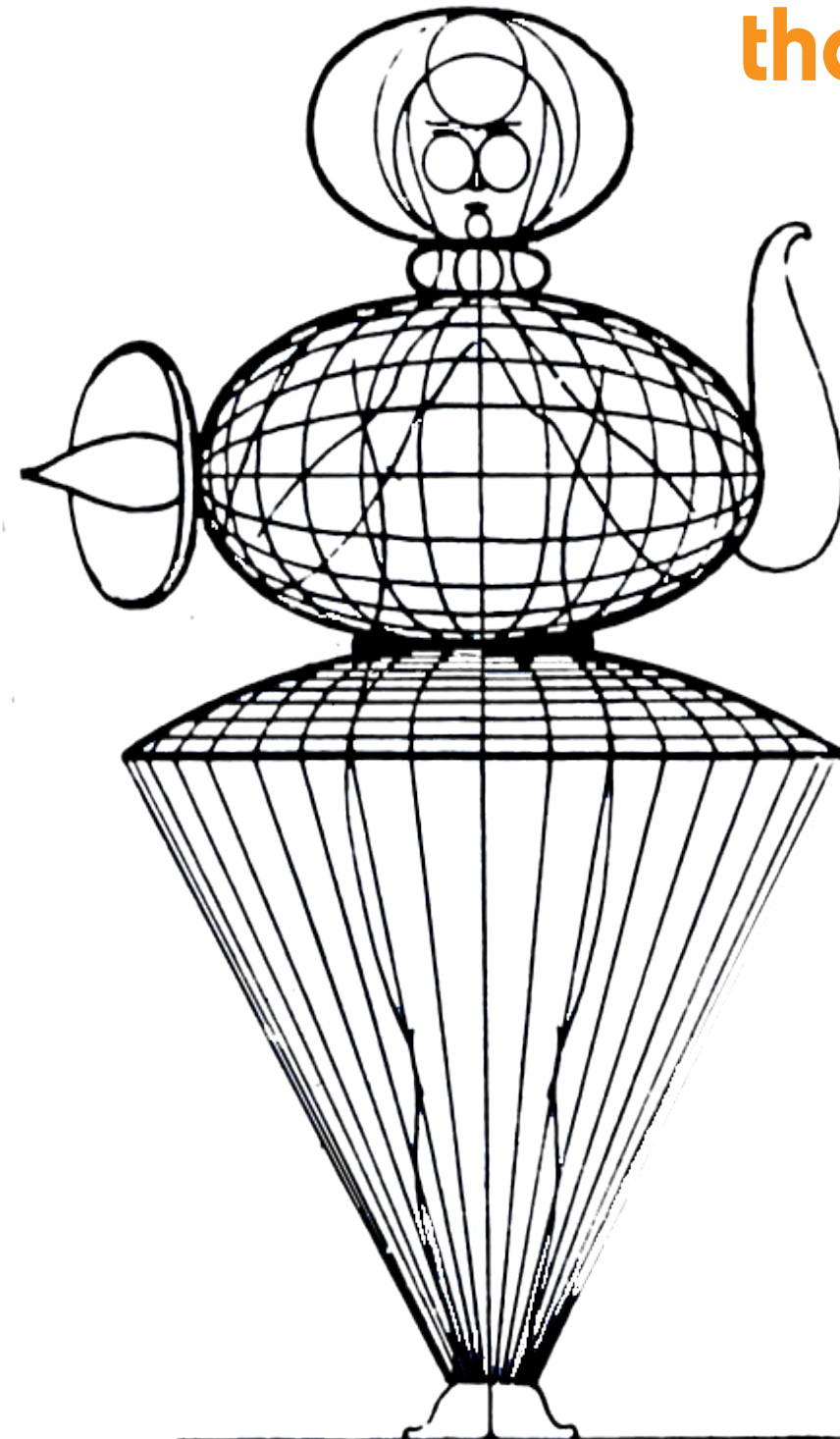






the bauhaus

is normally thought of as the school that produced straightforward, minimal design. The word brings to mind primary colors, diagonals, sans-serif fonts, and functionalist architecture. This exhibition will focus on a lesser-known side of the Bauhaus – one based in movement, self-expression, and joyful creativity.



the triadic ballet

was created in 1923 by Oskar Schlemmer and his students in the Bauhaus dance studio. Before the dance studio was even an official class at the art school, students and teachers would perform plays and dances informally, especially at the famous Bauhaus school parties. What evolved from this is a full length dance performance that is still being performed in today's theater world.

Triadic Ballet is unique not only in the context of the Bauhaus school, but unique for its time period, and perhaps most amazingly, unique across all modern art and design. Triadic Ballet could have been created in the 1930's, the 60's, the 90's, or last month, and would have the same effect – an experimental, one of a kind performance with more theory behind it than meets the eye.

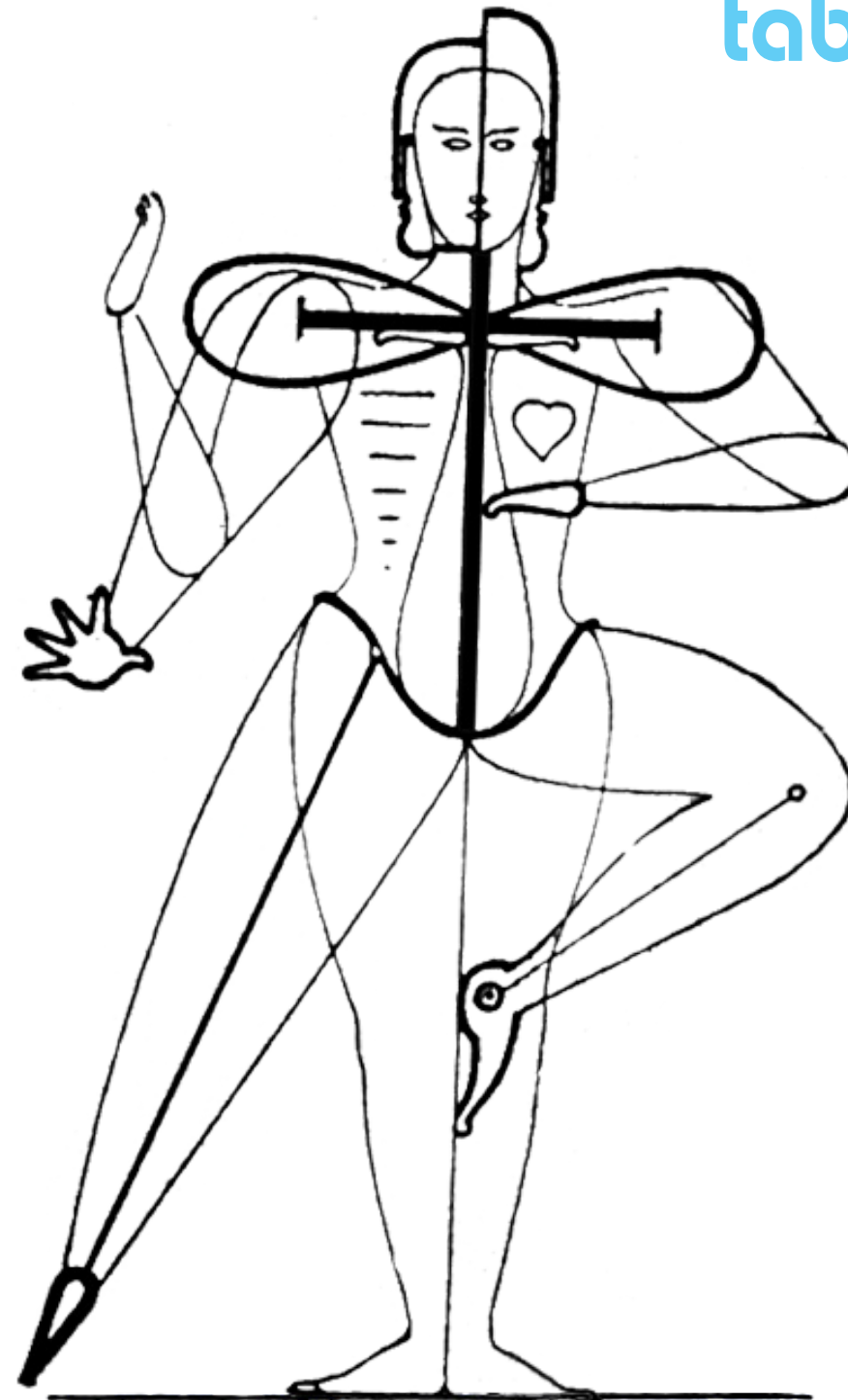


table of contents

Goals

mission/message	6
experience	8
location/site	10
target audience	12
content narrative	14
content organization	16
interpretive strategy	18
design strategy	20

Aesthetic

floor plans	22
look & feel	28
graphic treatment	30
entrance treatment	32

Design

introduction	34
choreography	36
student life	40
costume	42
exhibition flow	44
augmented reality	46
demonstrations	48
outcome	52



The Design of Bauhaus Body and Movement

will show the depth of Oskar Schlemmer's theater creations, past their entertainment value. Though at first it is seemingly vastly different from what the Bauhaus is typically remembered for, the exhibition's message will show that it is more closely tied to the Bauhaus' design principles than at first meets the eye. The content will prove, in fact, that Triadic Ballet presents a full case study of the Bauhaus' most important and fundamental principles. Theories and goals that the founders and first professors at the German art school can be found clearly in the performance itself, as well as its choreography, costume design, and music. This exhibition will express the relevance of the Triadic Ballet - showcasing how it demonstrates and even adds depth and richness to the Bauhaus' design legacy.

The mission, therefore, is to show Triadic Ballet's multi-faceted value within the Bauhaus' design legacy. Demonstrating its connection to Bauhaus design fundamentals as well as to the school's priority of human studies will reveal its importance beyond surface-level entertainment value. By showing well-known Bauhaus design principles through this exuberant, colorful, and quirky performance, the content will also highlight the creatively free and enthusiastic student life at the famous art school.



Backstage Spaces of a Working Theater

will create an experience that is reminiscent of the original Bauhaus school. The exhibition will have the flexible, informal feeling of a studio workshop, and the audience should feel engaged and involved, just like the students of the dance theater.

The target audience is already accustomed to seeing the traditional presentation of dance performances, and by having the exhibition backstage, the theater will be offering an exciting alternative experience for seasoned theater-goers.

The somewhat maze-like flow of these spaces will be maintained to give visitors the feeling of being in a working production space. The atmosphere of a rough, unfinished and somewhat darkened space should let the visitor experience a different side of a theater performance. The exhibition's design will embrace the raw, rough material elements of the backstage spaces to like brick, wood, and particle board along with plain track lighting. With that as the basis, a punch of Bauhaus color and style will be present throughout, focusing on bright colors from the Triadic Ballet and the more unstructured student life found in the dance studio.



The Byham Theater in Pittsburgh, PA

will serve as the site of Bauhaus Body and Movement. The Byham is located in a vibrant cultural district in downtown Pittsburgh, that attracts of a lot of regular theater-goers from the area as well as tourists interested in the performing arts. The exhibition will target both of these groups, encouraging those already interested in dance and theater to learn about something new.

The design will use large spaces for dance performance and audience participation. It will accurately display the scope and scale of Triadic Ballet, which has large sweeping stage spaces and broad choreography. In addition, despite the large commercial scale of the Byham Theater compared to other options, it maintains a close relationship with the community and strives to keep a diverse audience. It reaches locals as well as visitors, and hosts large scale traveling shows as well as lesser known and local productions. The combination of a spacious interior for design and an outreach philosophy that attracts the target audience makes the Byham the ideal choice for this exhibition.



This Exhibition's Target Audience

includes adults, students, and professionals. Specifically it will be targeted towards those with an existing interest in the arts and design, or those who are looking to learn more about fundamentals in design or design movements. No previous knowledge of theater or the Bauhaus dance theater are required to understand this exhibition - its main intent is to guide the visitor through the basics of Bauhaus principles of human studies and to introduce them to an art form they may know little about. The target audience can be broken down into three main demographic categories: **regular theater patrons, design professionals, and Pittsburgh locals.**



To Create an Experiential Narrative,

the exhibition will take the visitor through the conceptualization, creation, development, and production of Triadic Ballet and all of its elements. The design will use this performance piece as a case study of Bauhaus design principles as well as Bauhaus student culture, and so each portion of the exhibition will reflect an aspect of Triadic Ballet, and relate it back to the basics of the Bauhaus and the aspects of student life that drove and surrounded its creation and performance.



The Audience will Enter the Exhibition

from the back of the Byham Theater building, through an existing loading dock that will be transformed into a welcoming entrance. The two content-based galleries that follow the introductory section will focus on choreography, costume, and dance studio student life. These features will work together as the visitor explores various displays and activities that will teach about the Triadic Ballet's conception, development, performance, and influence.

As the visitor moves from these content-based galleries onto the main stage space, they will encounter a large, open, and flexible space full of high-energy activity. This section of the exhibition will center around interactivity and demonstrations. This space will also feature augmented reality experiences to further engage the visitors with Triadic Ballet in a light-hearted, informal way. Finally, the audience will conclude their exhibition experience in a concluding gallery space preceding the exit. This section will wrap up the experience with final imagery and footage, and will focus on celebrating the legacy of the Triadic Ballet and the Bauhaus.



Hands-On Exploration, Interaction,

and opportunities to personally explore Bauhaus design principles will be encouraged throughout Bauhaus Body and Movement. Demonstrations of the Bauhaus dances and ballets will be prominent, both live and on film. Up close and personal experiences with dancers and performers will be encouraged, as will audience participation. Recreations of stage elements and costumes will be prioritized to create an environment like the original Bauhaus dance workshop - informal and experimental.



The Overall Aesthetic and Design Strategy

is made up of two parts which work together to reach two major target audience groups: the “backstage experience” and Bauhaus inspired interior architecture and design. Both of these facets of the design strategy are focused around an experience reflecting the original Bauhaus dance workshop.

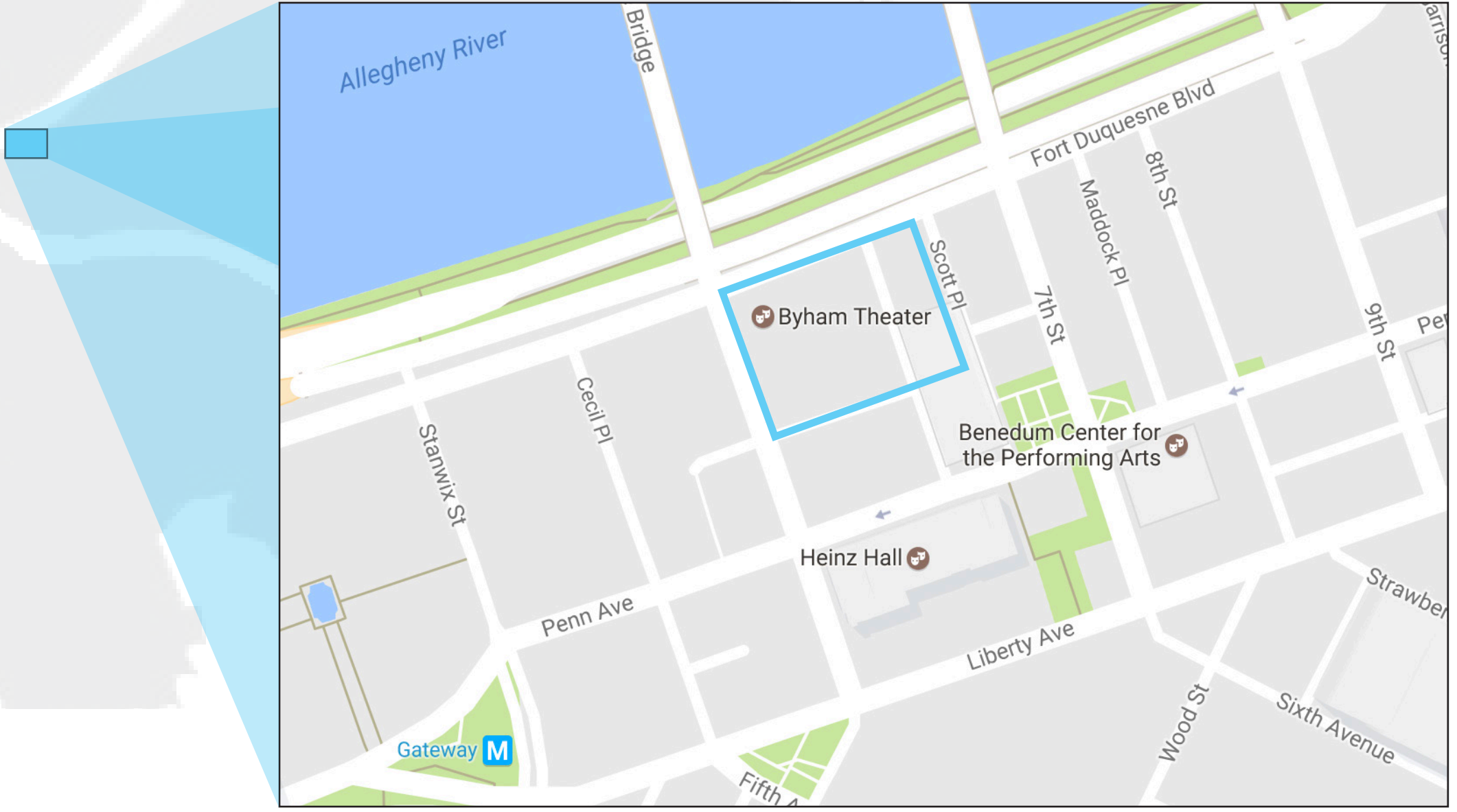
Within these two over-arching design themes, the exhibition will feature five core design elements, all directed towards teaching visitors about the Triadic Ballet in fun, engaging ways. Each of these design elements will balance content delivery and visitor enjoyment by providing interesting information that is experienced, not taught.

floor plans

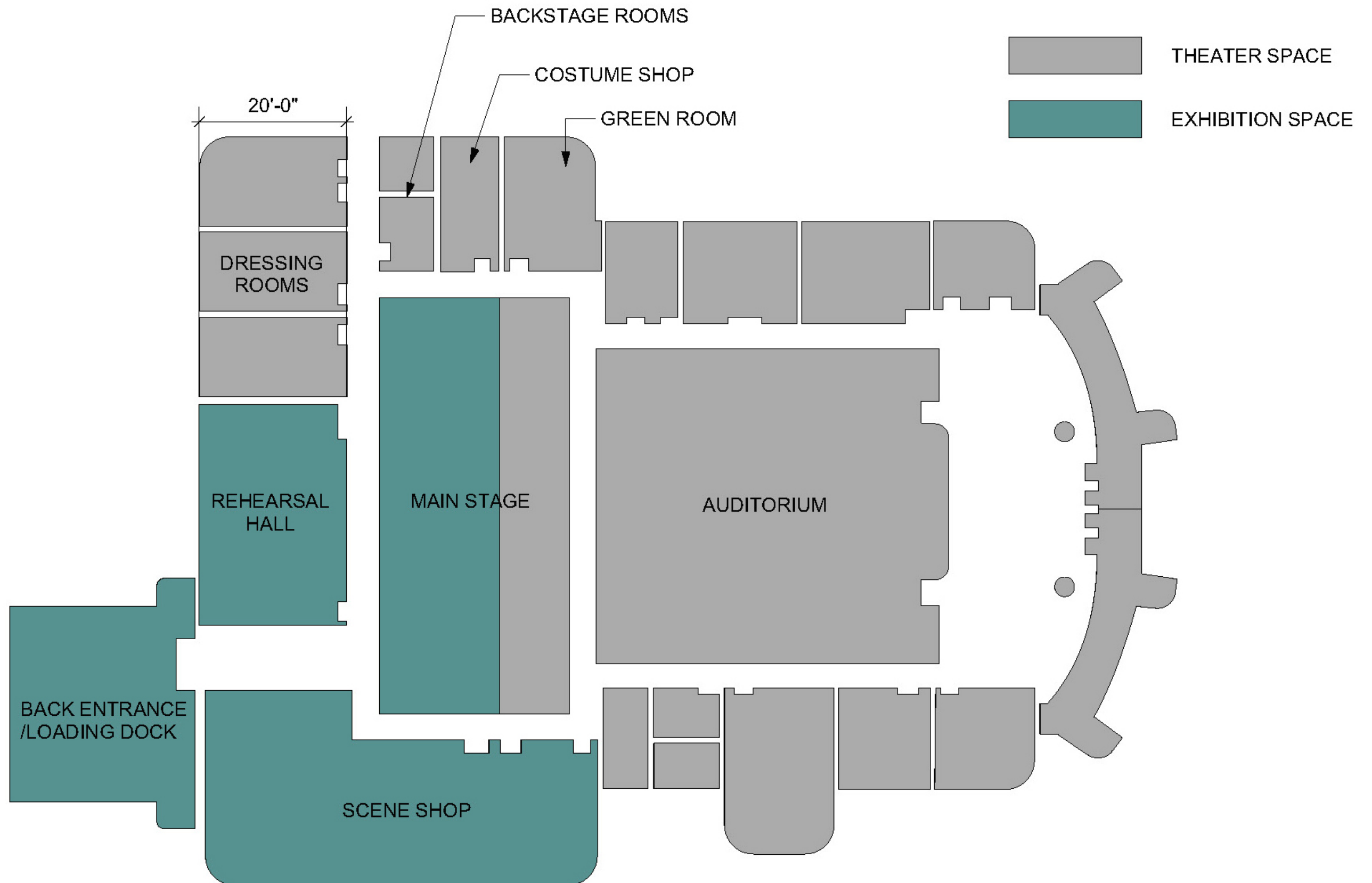
This Series of Plans Shows the Process

of overall design from determining a location and site, to abstract and concrete layouts of the exhibition space, to content organization and visitor flow. The backstage spaces of the Byham Theater in Pittsburgh, PA, were carefully chosen to exhibit the Triadic Ballet's history, choreography, and costume in an environment reminiscent of an active studio workshop.

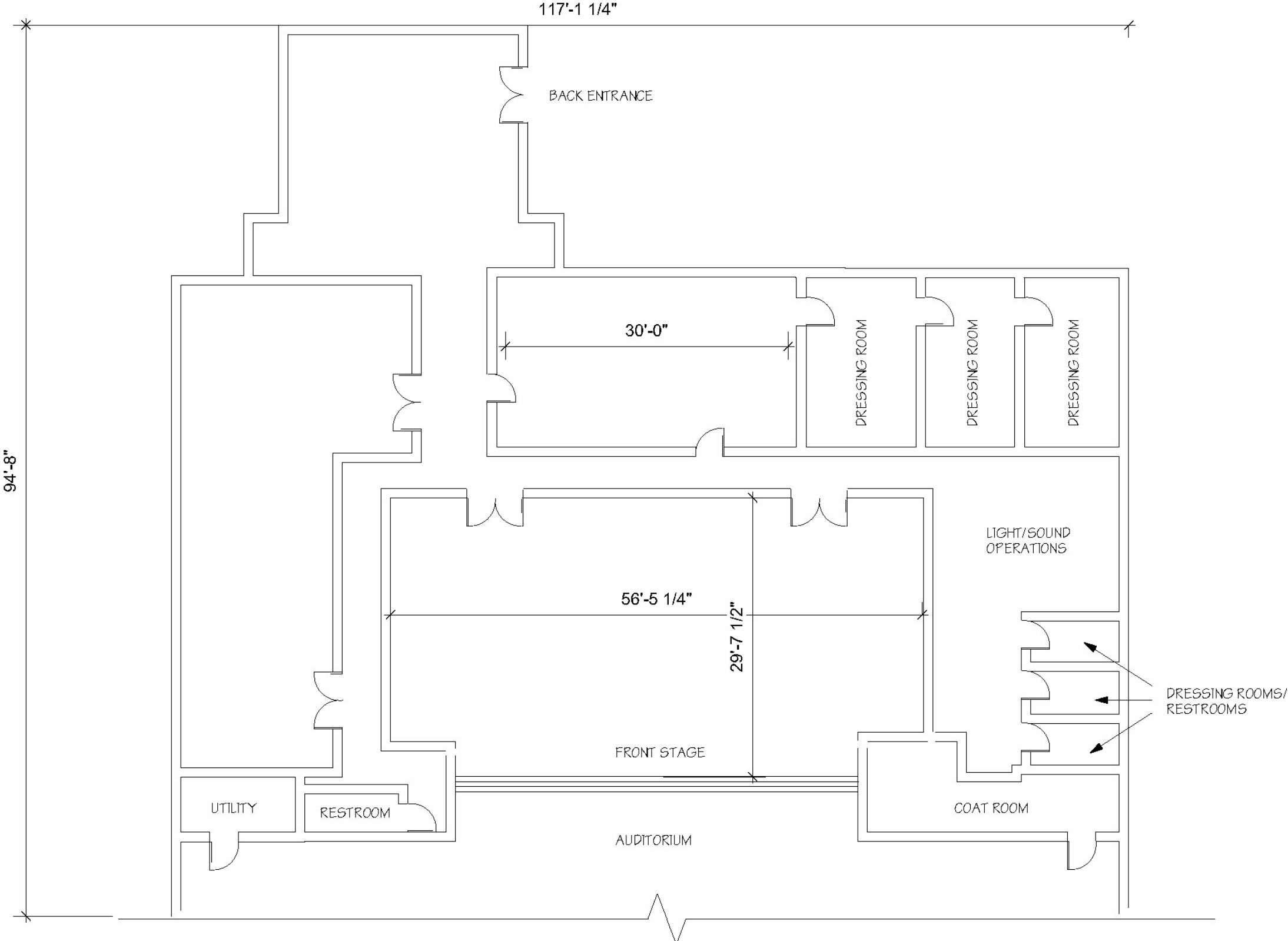
Site Plan: Byham Theater, Pittsburgh, PA



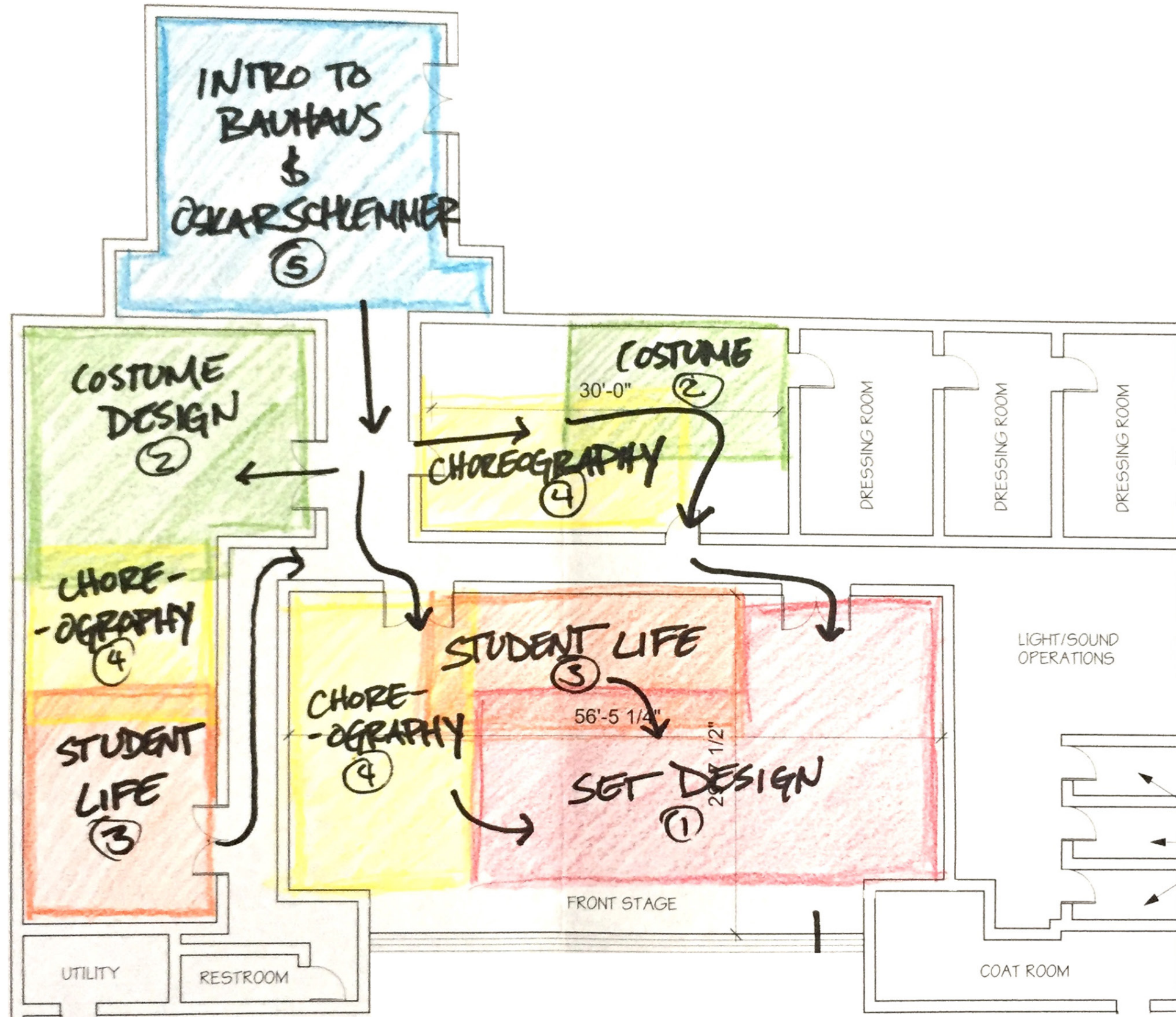
Abstract Space Plan



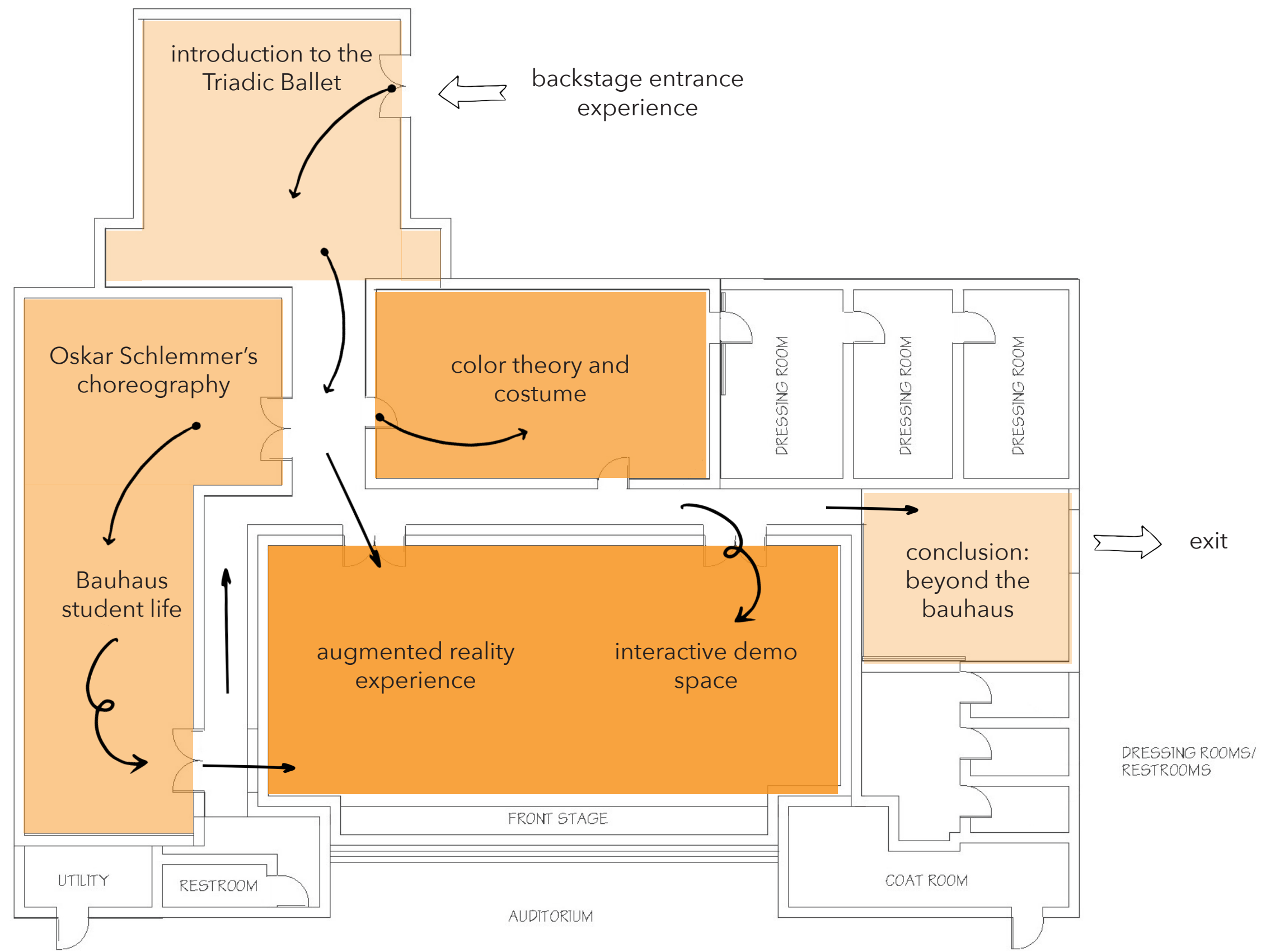
Exhibition Floor Plan



Concept Bubble Plan



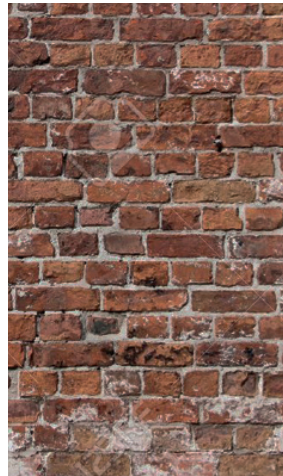
Visitor Flow Plan



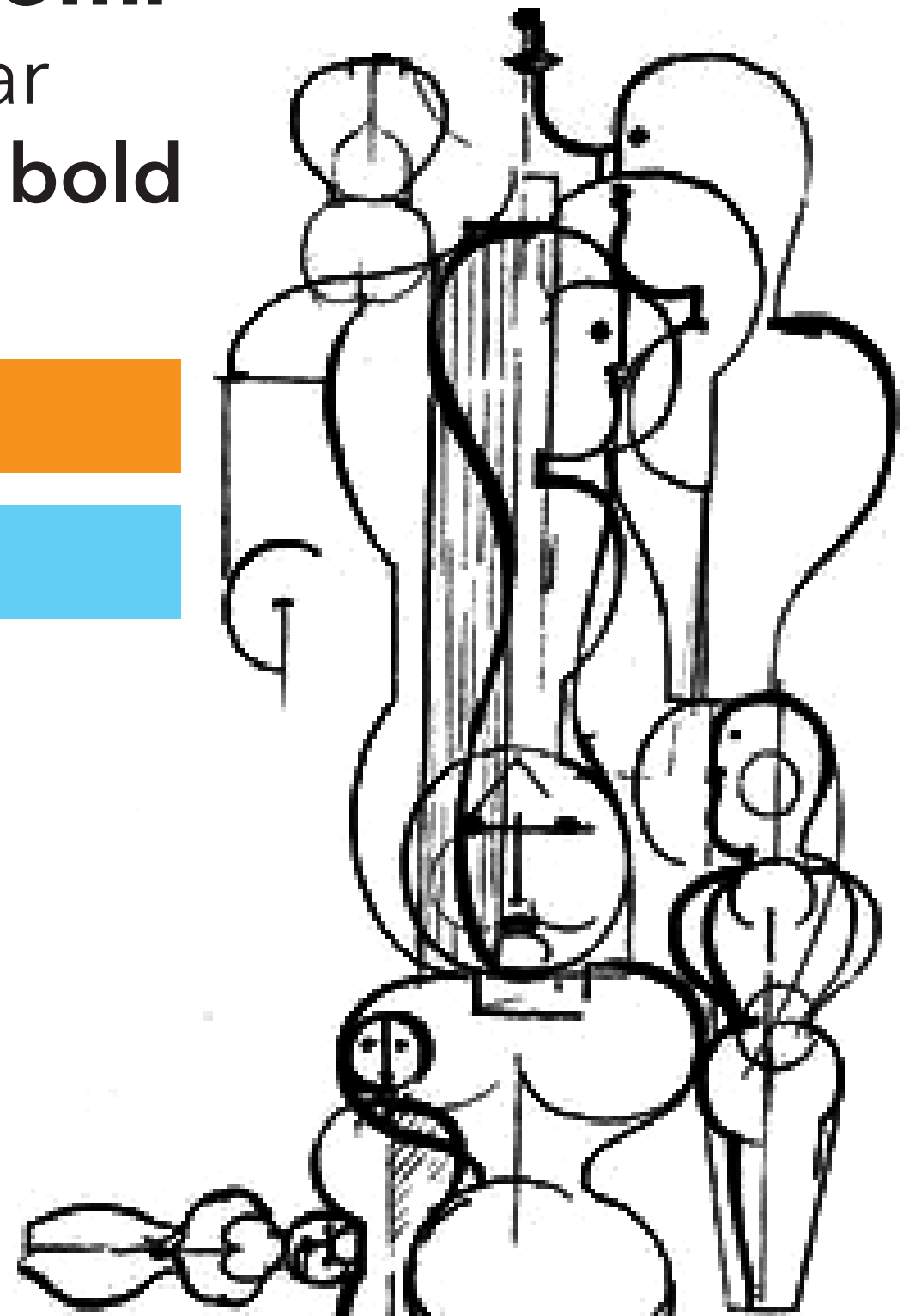
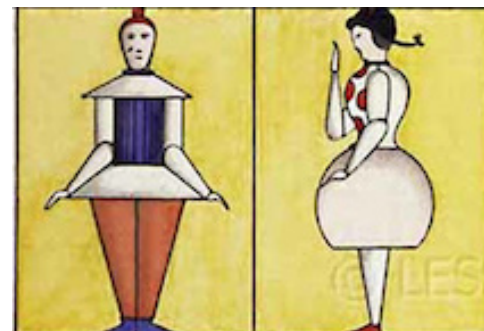
look and feel

The Exhibition's Design will Embrace

the raw, rough material elements of the backstage spaces like brick, wood, and particle board along with plain track lighting. With that as the basis, a punch of Bauhaus color and style will be present throughout, focusing on bright colors from the Triadic Ballet and the more unstructured student life found in the dance studio.



bauhaus std demi
avenir next regular
avenir next demi bold



graphic treatment

Exhibition Poster

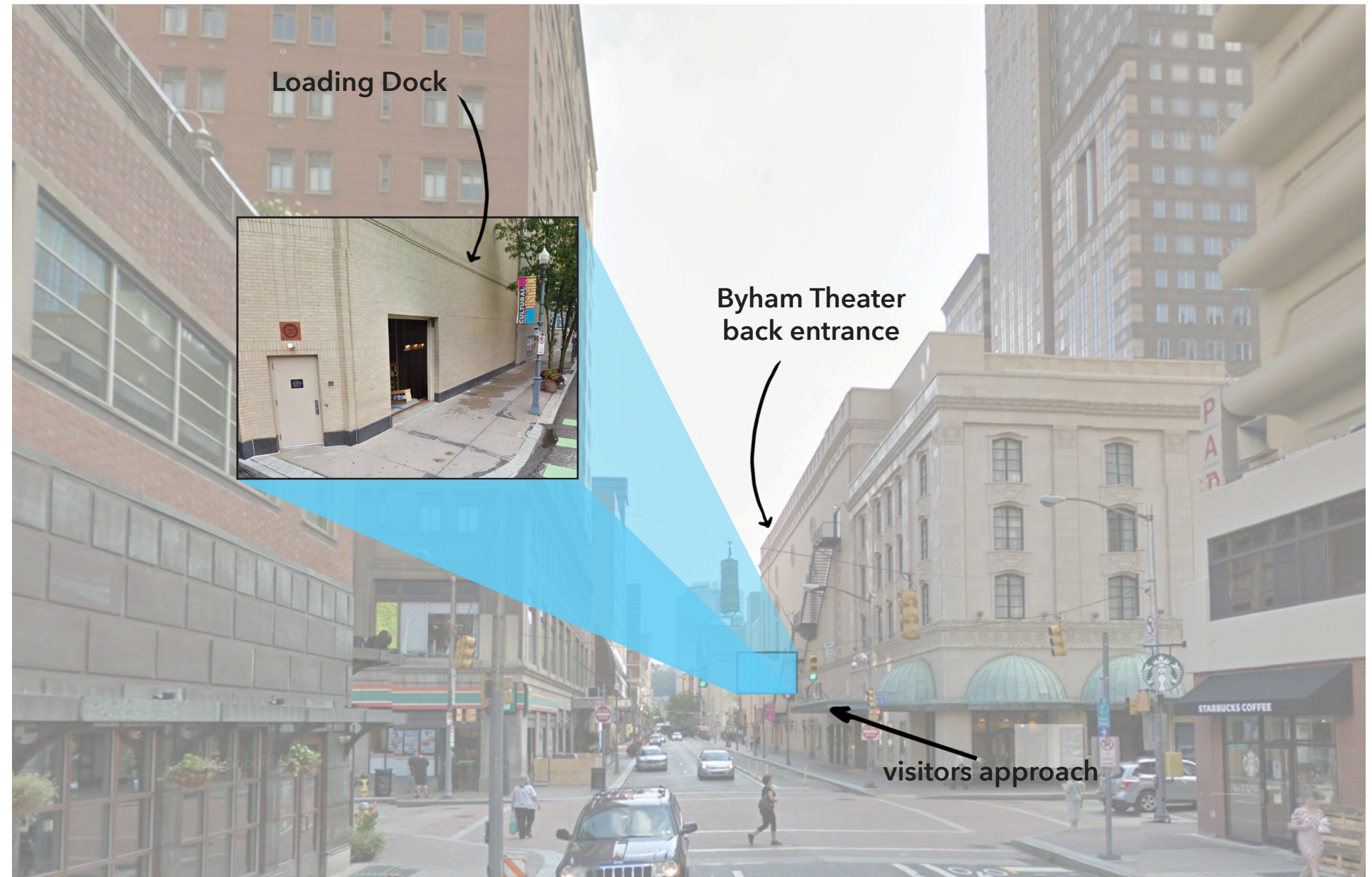


Exhibition Poster



entrance treatment

Visitor Entrance Views



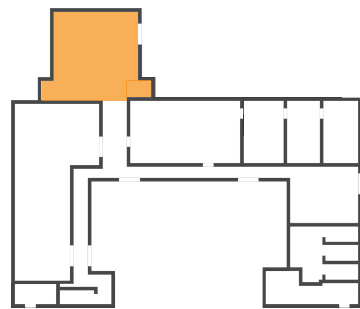
Entrance Treatment



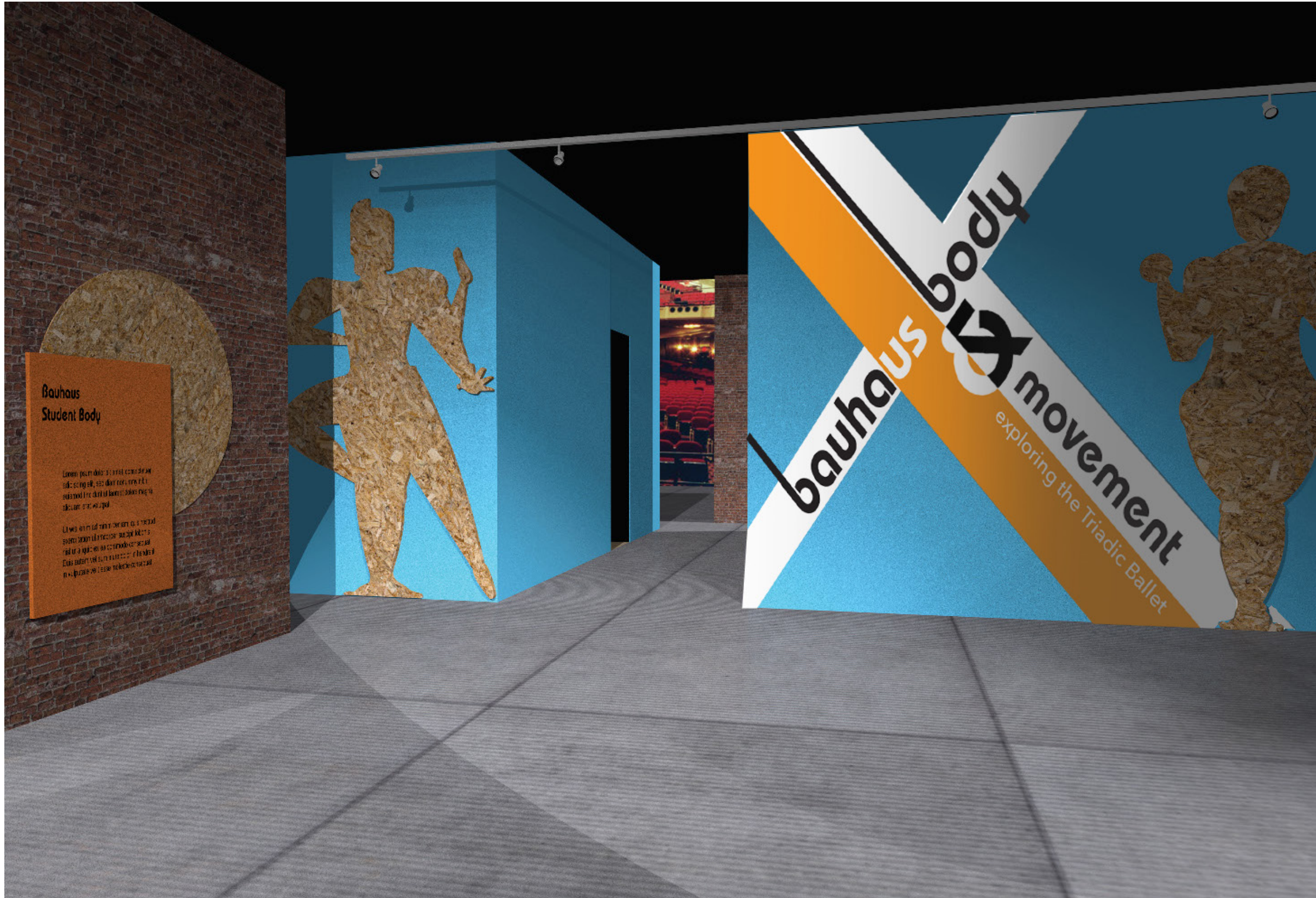
Introduction

A Loading Dock at the Back of the Theater

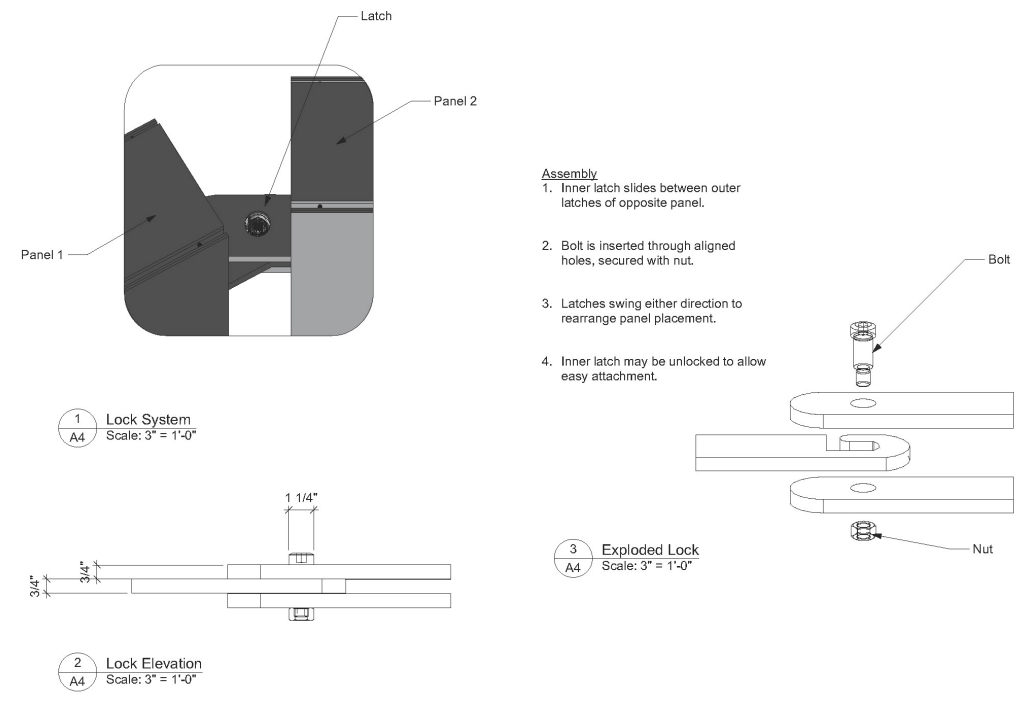
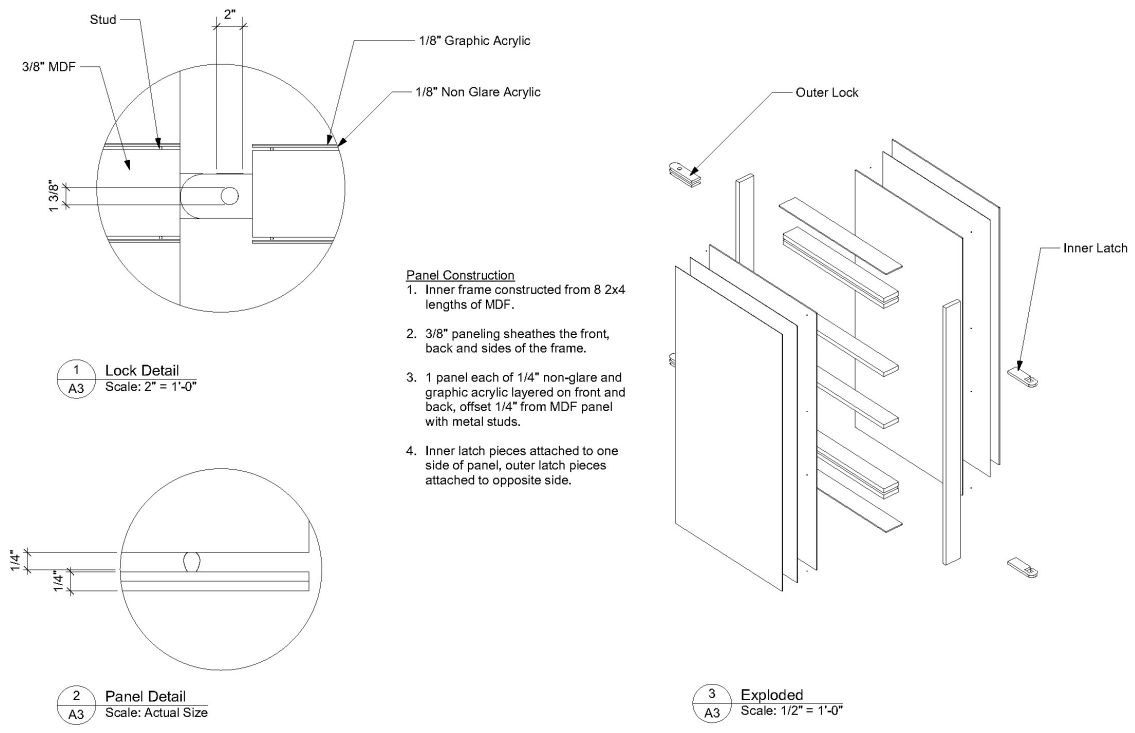
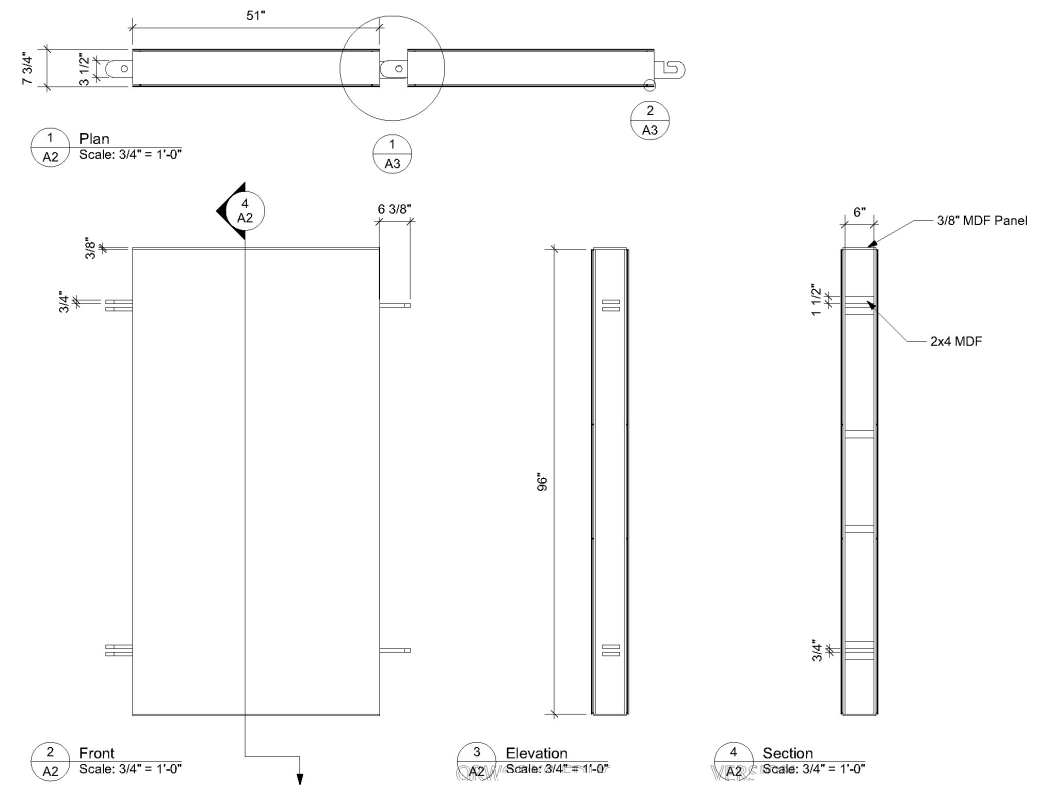
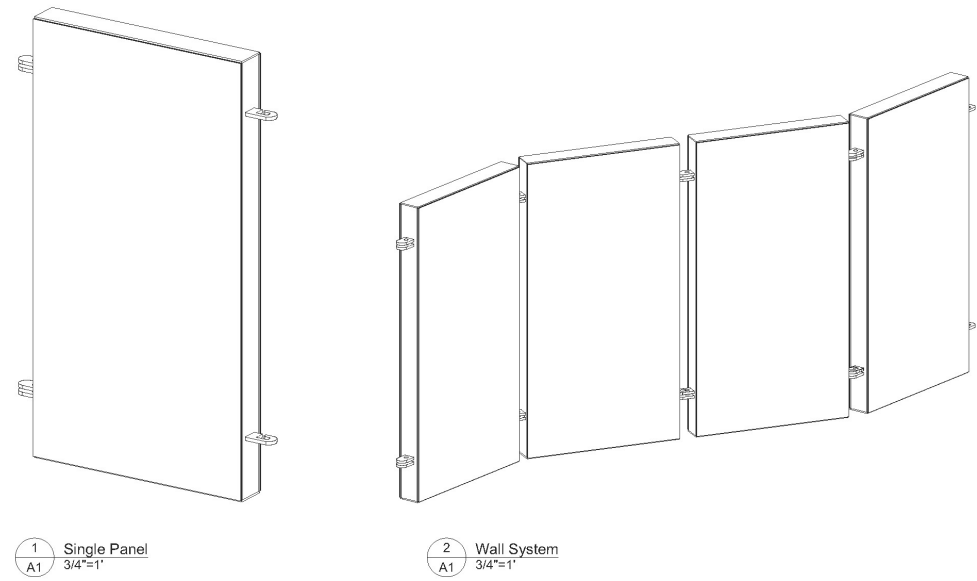
will be transformed into a welcoming entrance through which the visitors will begin their backstage experience. The first gallery space the visitor will experience will introduce the Bauhaus and the Triadic Ballet, setting the background for the deeper content they will encounter throughout the exhibition. This section will immediately impress upon the audience the vibrancy and liveliness not only of the colorful Triadic Ballet, but the Bauhaus school in general. Videos, bright imagery, and a lighthearted atmosphere will set the scene for the visitor experience.



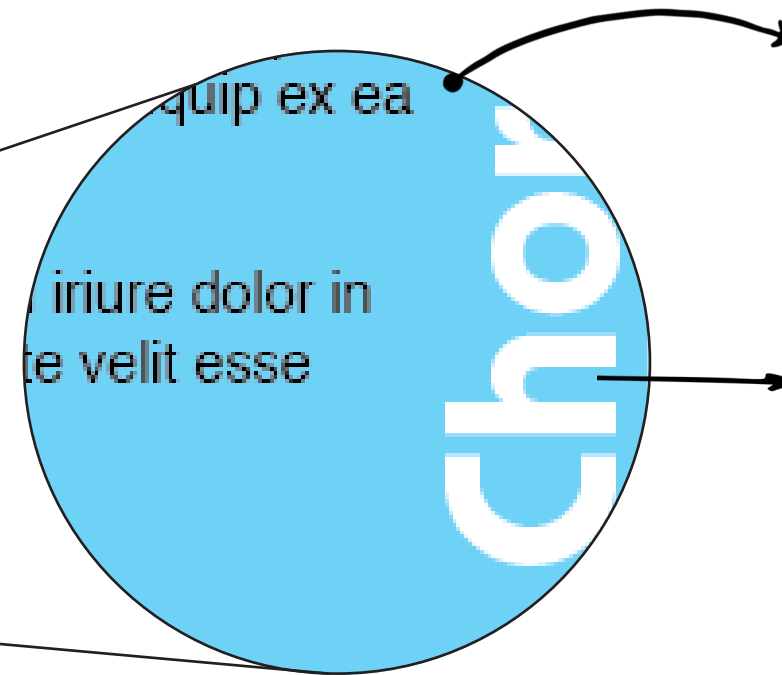
Introduction to the Bauhaus and Triadic Ballet



Graphic Panel Detail: Construction

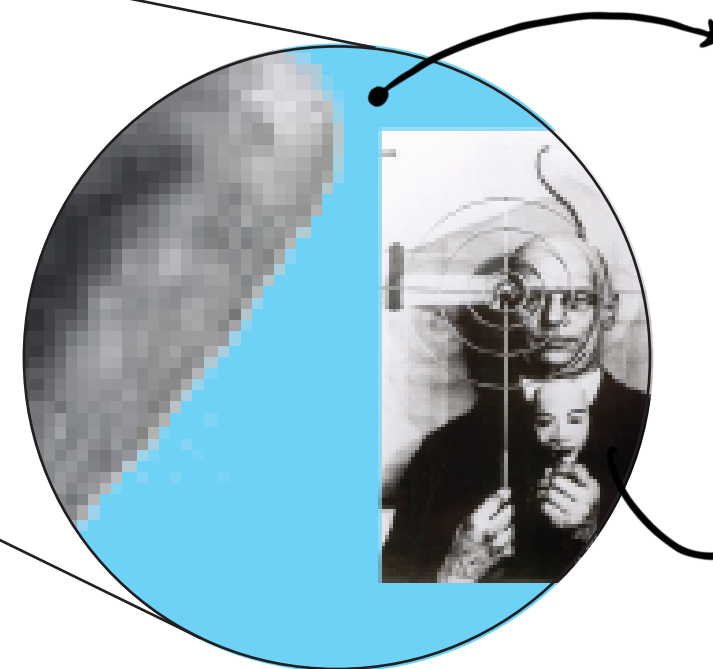


Graphic Panel Detail: Graphic Hierarchy



24 pt. Avenir Next Regular

70 pt. Bauhaus std Demi



Vinyl Treatment

Archival Photograph

Video Screen



Student Photography Display

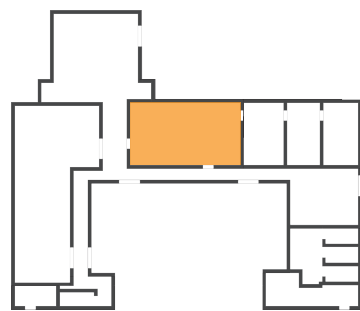


Gallery 1 Overview: Choreography and Student Life



A Display of the Elaborate Costumes

in Triadic Ballet will make up a large portion of the second backstage gallery. In previous exhibitions about the Bauhaus that included these costumes, they were displayed on traditional dress forms. But historically it has come across as outdated and can be perceived as “creepy” by viewers unfamiliar with the Bauhaus. So instead of trying to find a way to display stationary costumes, the exhibition will use live models to showcase them. The costumes are nothing without the movement that brings them to life, and live models will allow the costumes to be viewed as intended.

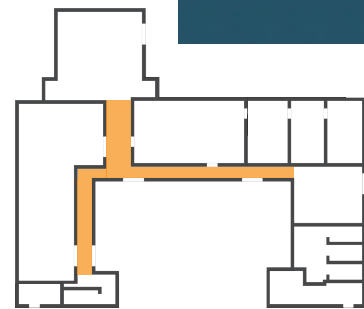


Costume Display in Gallery 2



exhibition flow

Backstage Hallway View 1



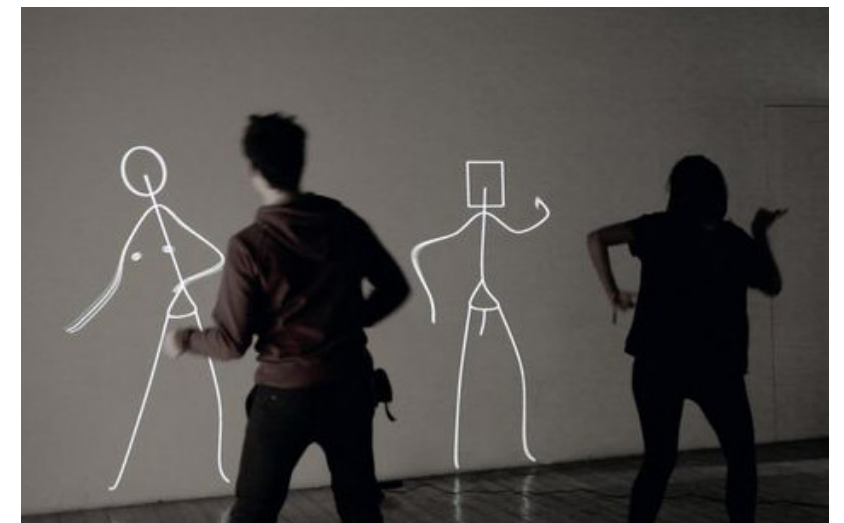
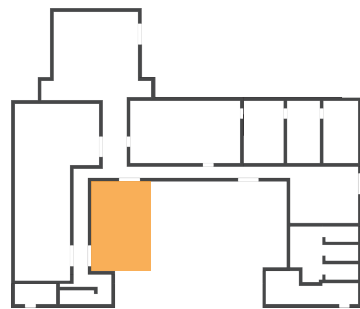
Backstage Hallway View 2



augmented reality

An Augmented Reality Screen

will allow visitors to move and dance, as well as try out some of the choreography from Triadic Ballet. The screen will trace the geometry of the movements and link it back to the drawings and theories they've experienced in the exhibition. It will also superimpose the costumes from Triadic Ballet onto the reflections on the screen. Visitors will get to see themselves in the crazy costumes they've seen on the dancers, and will be a fun way to get more familiar with the elaborate nature of their designs.



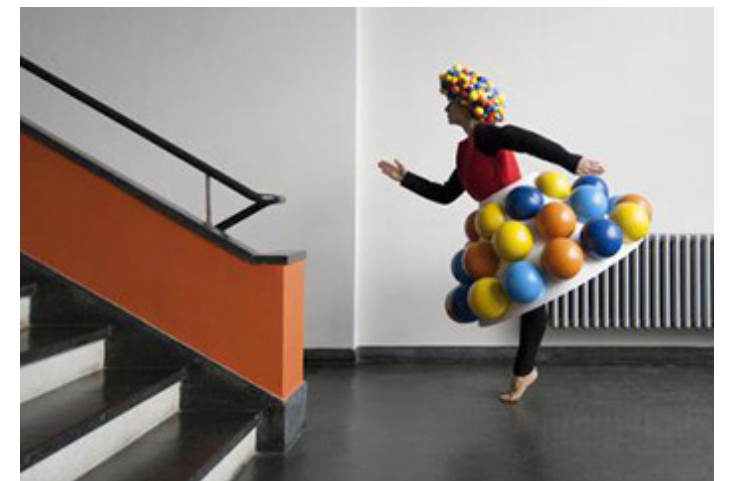
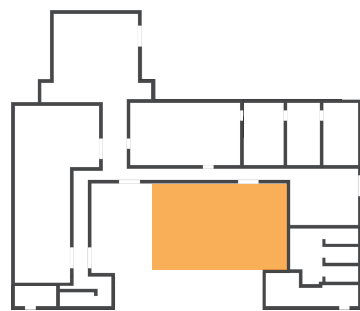
Augmented Reality Experience



demonstrations

In Keeping with the Engaging, Interactive

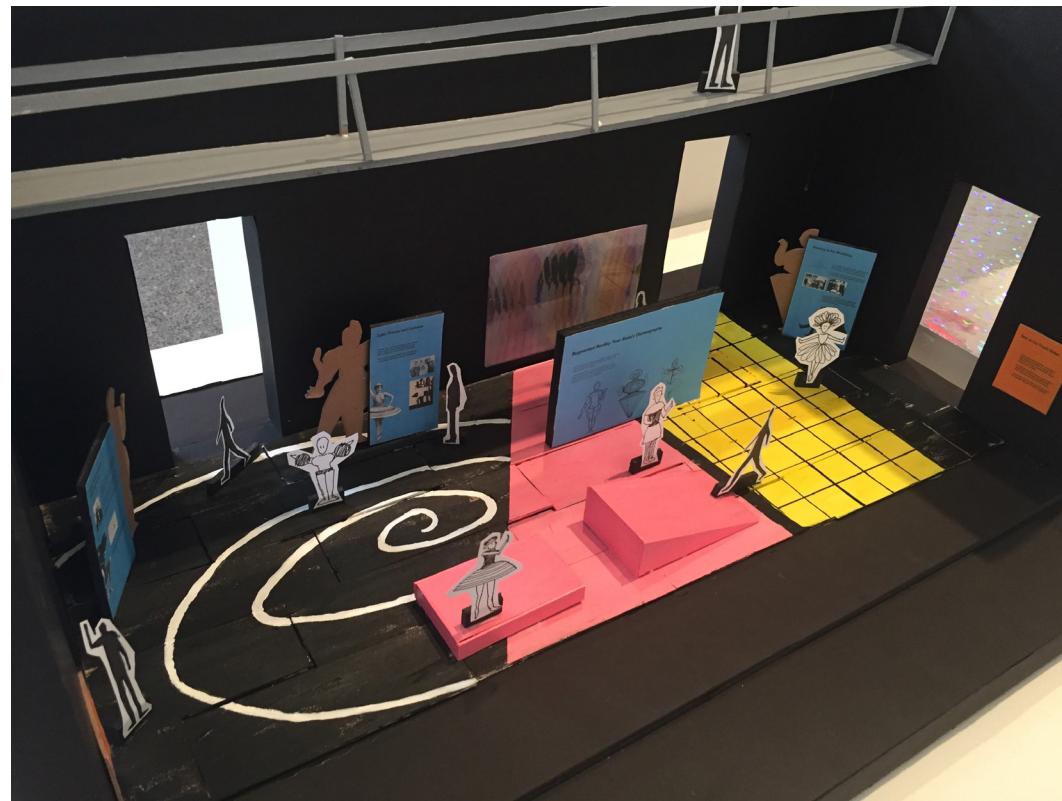
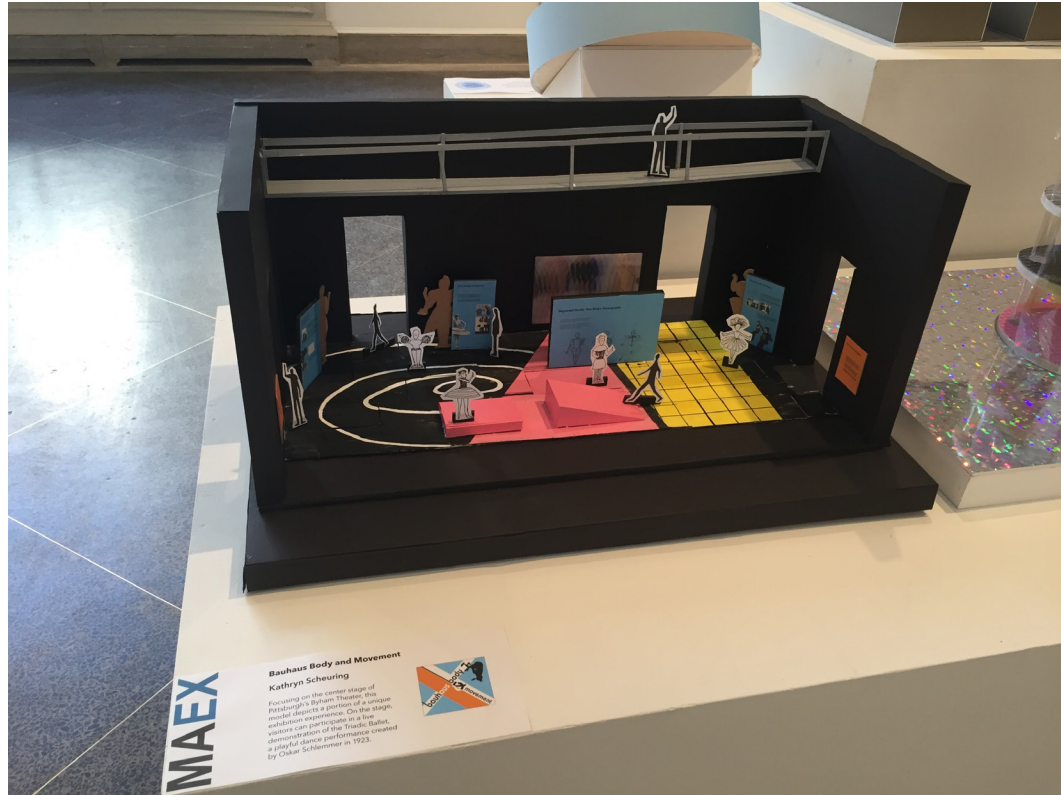
nature of this exhibition, and in order to offer a truly unique approach to the performing arts, the audience will experience stage performance in a brand new way. The target audience will be used to watching dance productions from the seats of an auditorium, facing the stage. This exhibition will bring visitors to the stage from the back, allowing them to walk directly into the action. The demonstration will be acted out by various performers, who will be approachable, and will encourage visitors to interact with them. The audience will have the chance to get up close and personal with the dancers, an experience that is impossible in most traditional ballet performances. This will encourage the audience to enjoy the free and open nature of the exhibition and become involved and engaged.



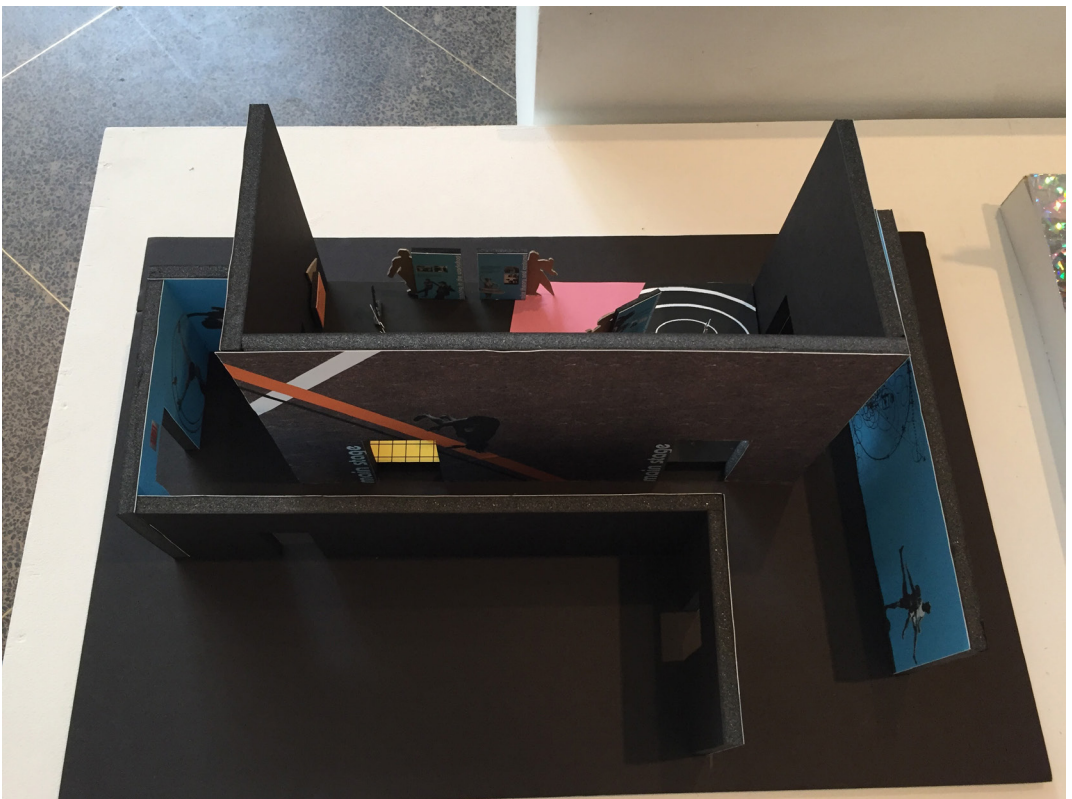
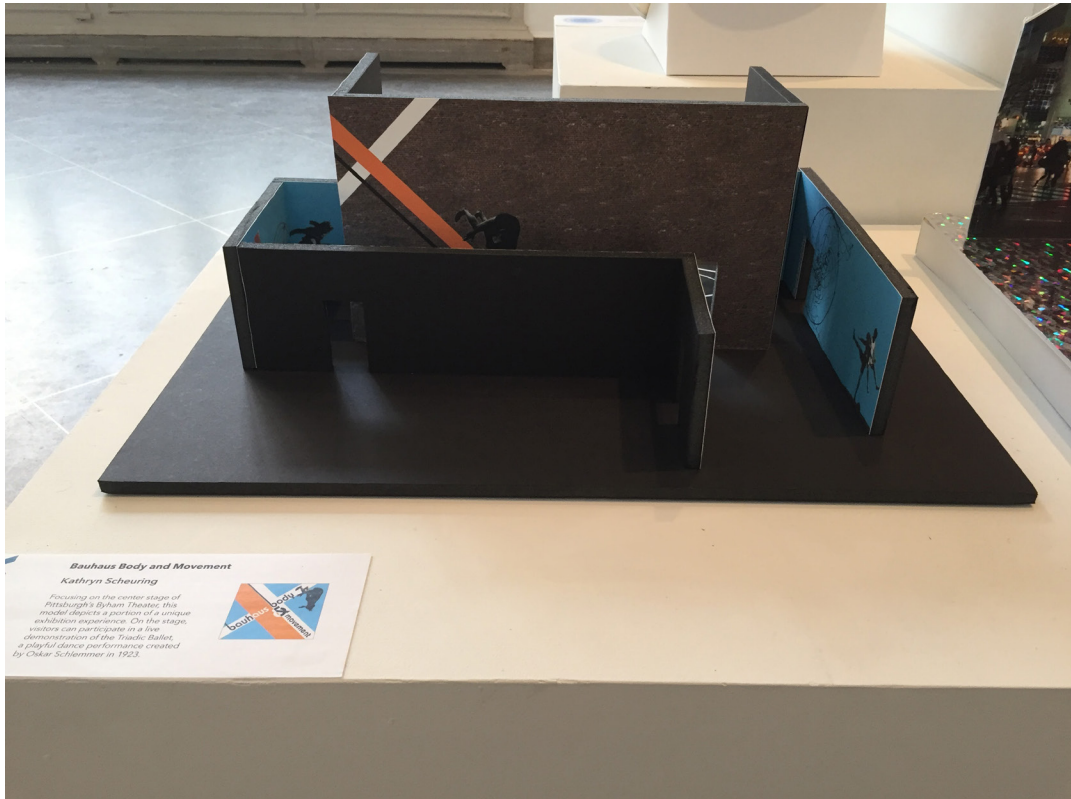
Stage Space: Pre-design

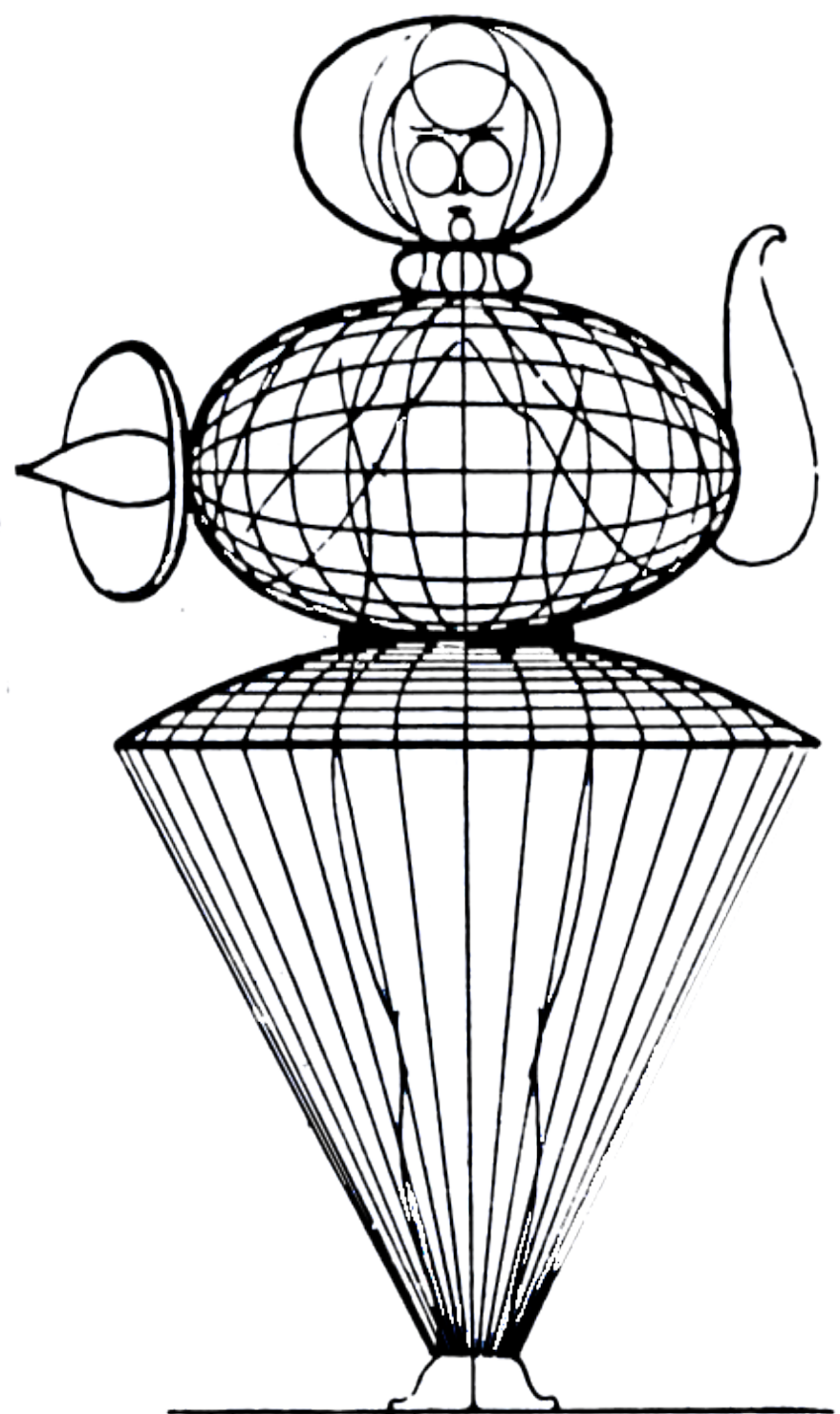
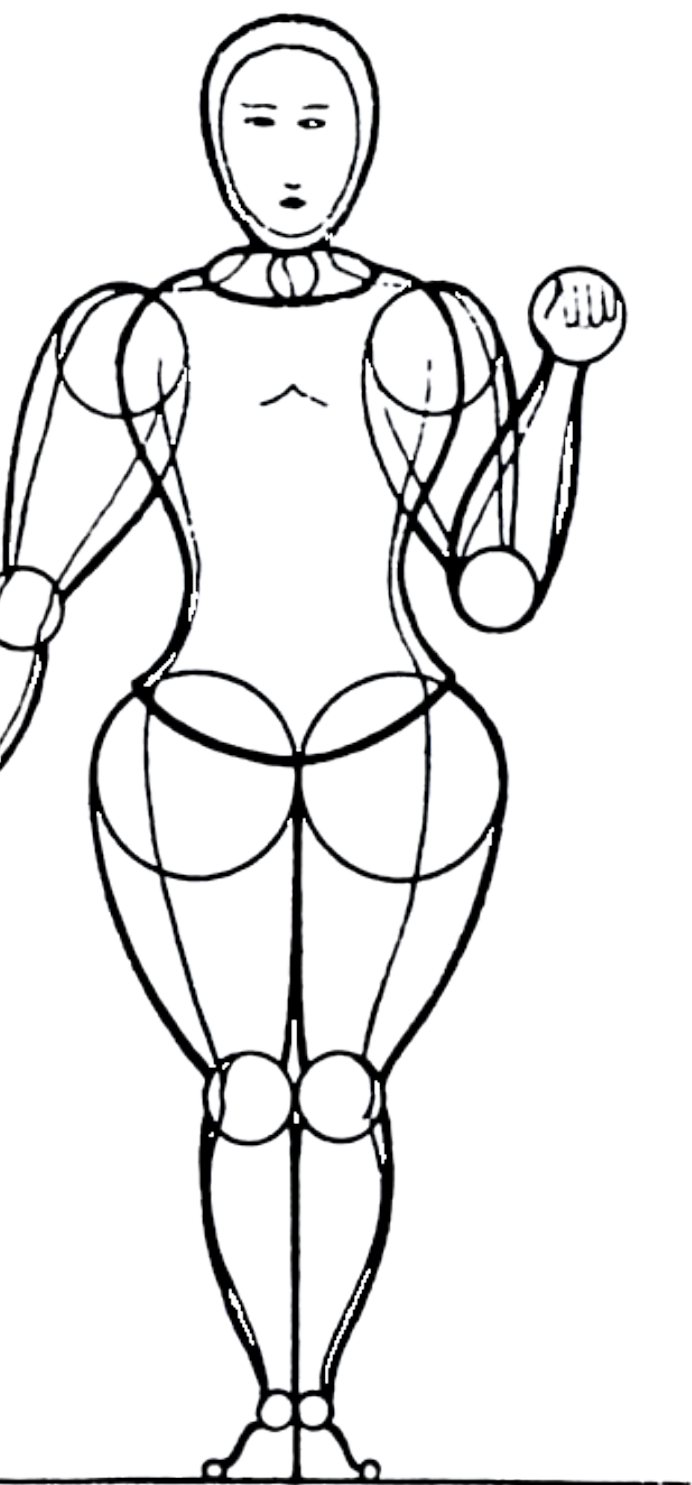


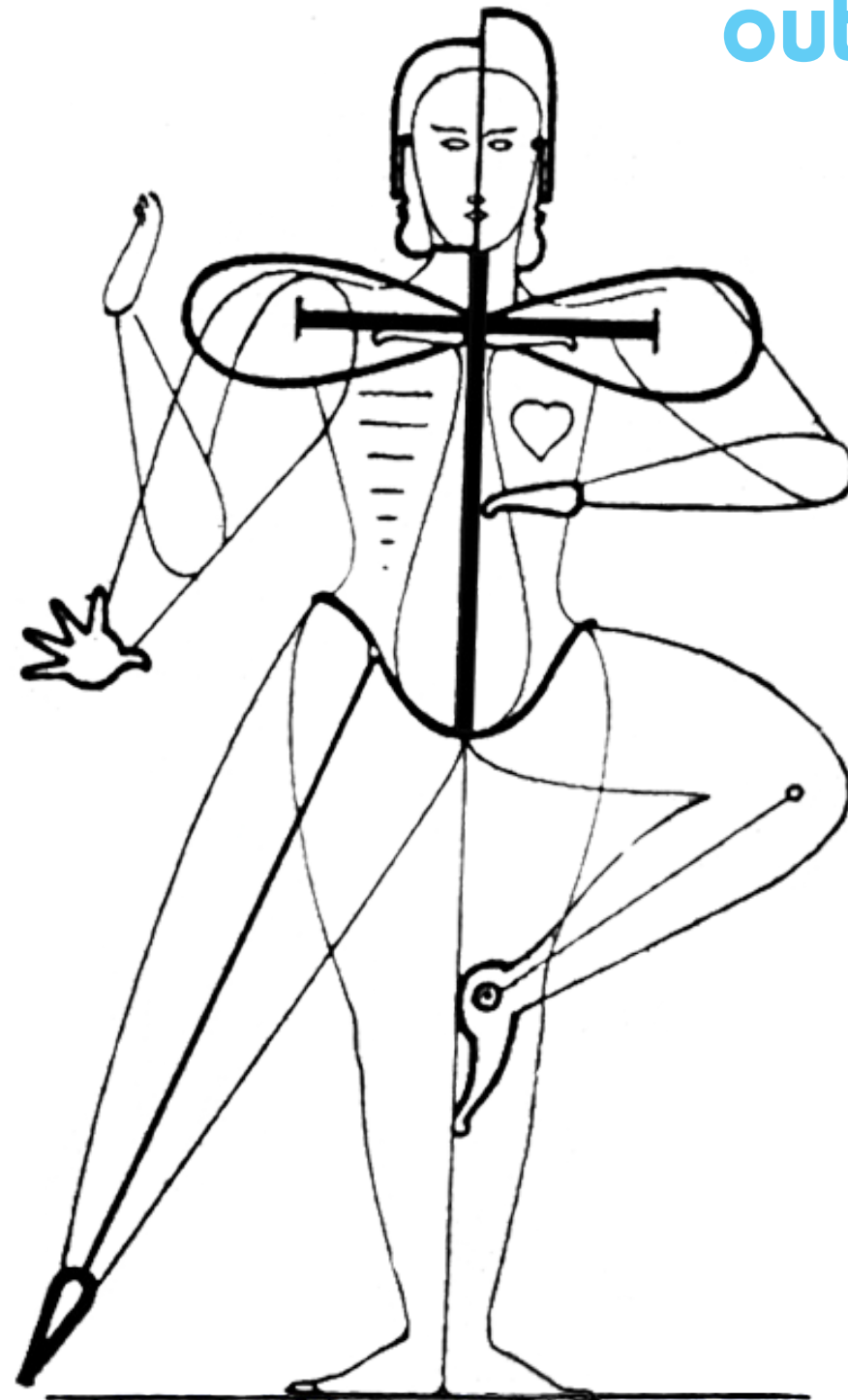
Stage Maquette: First Draft



Stage Maquette: Final







outcome

The target audience should come away from this exhibition with an understanding of the Triadic Ballet, and with an appreciation of how it fits into the Bauhaus design legacy. Most of all, though, the audience should leave having had an engaging, fun experience that helps them connect with the vibrant creative minds at the Bauhaus.





